



210 Heterojunction Solar Cells

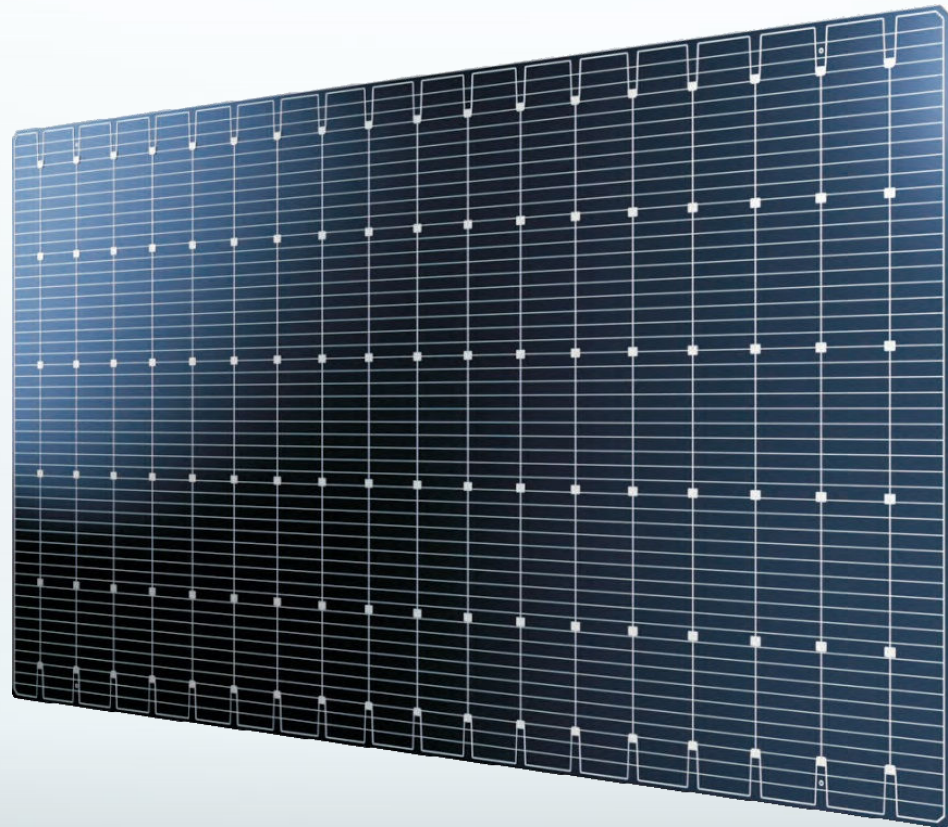
efficiency of testing production

24.2~25%



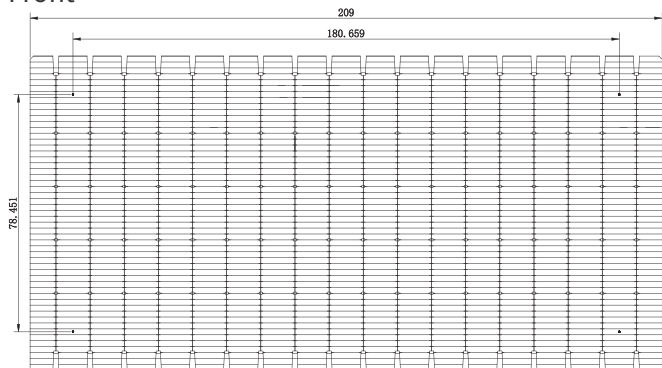
Dimension : 210mm ×105mm±0.25mm

Cell Thickness : 130μm±30μm

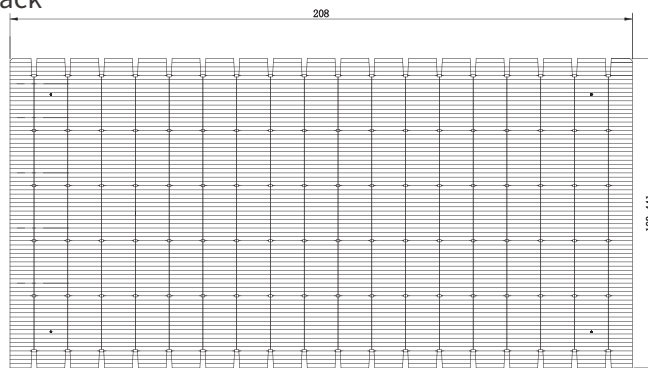


JH21018BBG12

Front



Back

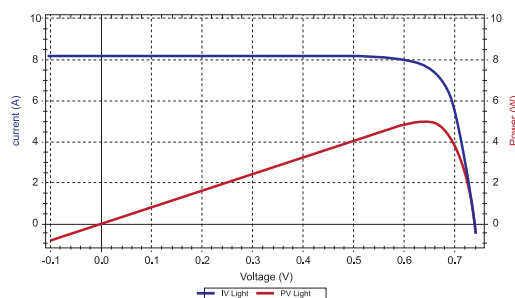
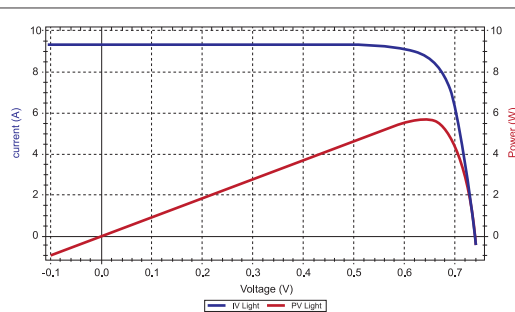


Electrical Performance

	Eff (%)	Pmpp(W)	Umpp(V)	Impp (A)	Voc (V)	Isc (A)	FF (%)
210M-25.0	25.0	5.52	0.670	8.24	0.748	8.68	85.3
210M-24.9	24.9	5.50	0.668	8.23	0.748	8.68	85.0
210M-24.8	24.8	5.48	0.667	8.22	0.747	8.67	84.8
210M-24.7	24.7	5.46	0.665	8.21	0.746	8.67	84.7
210M-24.6	24.6	5.43	0.665	8.19	0.743	8.67	84.2
210M-24.5	24.5	5.42	0.662	8.18	0.742	8.67	84.0
210M-24.4	24.4	5.39	0.660	8.17	0.741	8.66	83.9
210M-24.3	24.3	5.36	0.658	8.16	0.740	8.66	83.6
210M-24.2	24.2	5.34	0.655	8.14	0.739	8.65	83.4

The amplitude of Voc (Isc) decreasing with irradiation intensity based on STC (1000W/m², AM1.5, 25°C).

I-V Curves



Irradiation Dependence Characteristics

Irradiation (W/m ²)	Voc	Isc
1000	1.0	1.0
900	0.99	0.9
800	0.99	0.8
600	0.98	0.6
400	0.96	0.4

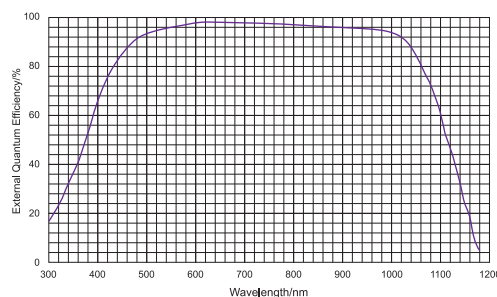
Temperature Coefficient

Voc (%/K)	-0.27
Isc	+0.055
Pmax (%/K)	-0.26

Physical Characteristics

Dimension	210mm×105mm±0.25mm
Thickness	130±30μm
Front (-)	18*0.06mm Busbar(Sliver), Blue layer (TCO) (In order to improve efficiency, it will be continuously optimized and upgraded)
Back (+)	18*0.06mm Busbar(Sliver), 148Finger (Sliver), Blue layer (TCO) (In order to improve efficiency, it will be continuously optimized and upgraded)

Spectral Response



*The specifications and key features contained in this datasheet may deviate slightly from our actual products due to the ongoing innovation and product enhancement. Solar reserves the right to make necessary adjustment to the information described herein at anytime without further notice.